

Anti-APOL1 antibody (297-309) (STJ72575)

GENERAL INFORMATION

Product Type	Primary antibodies
Applications	Pep-ELISA/WB
Host / Source	Goat
Reactivity	Human

PRODUCT PROPERTIES

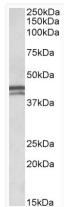
Clonality	Polyclonal
Concentration	0.5 mg/mL
Conjugation	Unconjugated
Purification	Purified from goat serum by ammonium sulphate precipitation followed by antigen affinity chromatography using the immunizing peptide.
Dilution Range	Peptide ELISA: antibody detection limit dilution 1:16000. WB: Approx 42+45kDa bands observed in Human Placenta lysates (calculated MW of 45.9kDa and 42.2kDa according to NP_663318.1 and NP_001130013.1 resp.). Recommended concentration: 0.1-0.3µg/
Formulation	0.5 mg/ml in Tris saline, 0.02% sodium azide, pH7.3 with 0.5% bovine serum albumin. NA
Isotype	IgG
Storage Instruction	Store at -20°C on receipt and minimise freeze-thaw cycles.

TARGET INFORMATION

Gene ID	8542
Gene Symbol	APOL1
UniProt ID	APOL1_HUMAN
Immunogen Region	297-309
Immunogen Sequence	PHASASRPRVTEP
Specificity	This antibody is expected to recognize all three reported isoforms (NP_003652.2; NP_663318.1; NP_001130013.1). Reported variants represent identical protein: NP_003652.2, NP_001130012.1

ADDITIONAL INFORMATION

Note STRICTLY FOR FURTHER SCIENTIFIC RESEARCH USE ONLY (RUO). MUST NOT TO BE USED IN DIAGNOSTIC OR THERAPEUTIC APPLICATIONS.



STJ72575 (0.1 µg/ml) staining of Human Placenta lysate (35 µg protein in RIPA buffer). Primary incubation was 1 hour. Detected by chemiluminescence.