

Anti-ACPP/PAP antibody (269-282) (STJ72574)

GENERAL INFORMATION

Product Type	Primary antibodies
Applications	Pep-ELISA/WB/IHC
Host / Source	Goat
Reactivity	Human

PRODUCT PROPERTIES

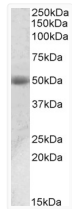
Clonality	Polyclonal
Concentration	0.5 mg/mL
Conjugation	Unconjugated
Purification	Purified from goat serum by ammonium sulphate precipitation followed by antigen affinity chromatography using the immunizing peptide.
Dilution Range	Peptide ELISA: antibody detection limit dilution 1:32000. WB: Approx 50kDa band observed in Human Prostate lysates (calculated MW of 48.3kDa according to NP_001127666.1). Recommended concentration: 0.01-0.03µg/ml. IHC: In paraffin embedded Hu
Formulation	0.5 mg/ml in Tris saline, 0.02% sodium azide, pH7.3 with 0.5% bovine serum albumin. NA
Isotype	IgG
Storage Instruction	Store at -20°C on receipt and minimise freeze-thaw cycles.

TARGET INFORMATION

Gene ID	55
Gene Symbol	ACP3
UniProt ID	PPAP_HUMAN
Immunogen Region	269-282
Immunogen Sequence	NHMKRATQIPSYKK
Specificity	This antibody is expected to recognize both reported isoforms (NP_001127666.1; NP_001090.2).

ADDITIONAL INFORMATION

Note STRICTLY FOR FURTHER SCIENTIFIC RESEARCH USE ONLY (RUO). MUST NOT TO BE USED IN DIAGNOSTIC OR THERAPEUTIC APPLICATIONS.



STJ72574 (0.01µg/ml) staining of Human Prostate lysate (35µg protein in RIPA buffer). Primary incubation was 1 hour. Detected by chemiluminescence.