

Anti-CRTC2-Mouse antibody (Internal) (STJ72570)

GENERAL INFORMATION

Product Type	Primary antibodies
Applications	Pep-ELISA/WB
Host / Source	Goat
Reactivity	Mouse/Rat

PRODUCT PROPERTIES

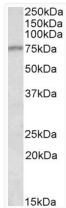
Clonality	Polyclonal
Concentration	0.5 mg/mL
Conjugation	Unconjugated
Purification	Purified from goat serum by ammonium sulphate precipitation followed by antigen affinity chromatography using the immunizing peptide.
Dilution Range	Peptide ELISA: antibody detection limit dilution 1:32000. WB: Approx 75kDa band observed in Mouse and Rat Brain and Spinal Cord lysates (calculated MW of 73.3kDa according to Mouse NP_859066.1 and 73.1kDa according to Rat NP_001029067.1). Recomme
Formulation	0.5 mg/ml in Tris saline, 0.02% sodium azide, pH7.3 with 0.5% bovine serum albumin. NA
Isotype	IgG
Storage Instruction	Store at -20°C on receipt and minimise freeze-thaw cycles.

TARGET INFORMATION

Immunogen Region	Internal
Immunogen Sequence	HGQQPYHRPIND

ADDITIONAL INFORMATION

Note STRICTLY FOR FURTHER SCIENTIFIC RESEARCH USE ONLY (RUO). MUST NOT TO BE USED IN DIAGNOSTIC OR THERAPEUTIC APPLICATIONS.



STJ72570 (0.03 µg/ml) staining of Rat Spinal Cord lysate (35 µg protein in RIPA buffer). Primary incubation was 1 hour. Detected by chemiluminescence.