

Anti-STS2/TULA antibody (470-482) (STJ72562)

GENERAL INFORMATION

Product Type	Primary antibodies
Applications	Pep-ELISA/WB/IHC
Host / Source	Goat
Reactivity	Human

PRODUCT PROPERTIES

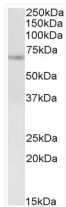
Clonality	Polyclonal
Concentration	0.5 mg/mL
Conjugation	Unconjugated
Purification	Purified from goat serum by ammonium sulphate precipitation followed by antigen affinity chromatography using the immunizing peptide.
Dilution Range	Peptide ELISA: antibody detection limit dilution 1:8000. WB: Approx 70kDa band observed in Human Spleen lysates (calculated MW of 69.8kDa according to NP_001001895.1). Recommended concentration: 1-3µg/ml. IHC: In paraffin embedded Human Breas
Formulation	0.5 mg/ml in Tris saline, 0.02% sodium azide, pH7.3 with 0.5% bovine serum albumin. NA
Isotype	IgG
Storage Instruction	Store at -20°C on receipt and minimise freeze-thaw cycles.

TARGET INFORMATION

Gene ID	53347
Gene Symbol	UBASH3A
UniProt ID	UBS3A_HUMAN
Immunogen Region	470-482
Immunogen Sequence	DSGIRISSVFASP
Specificity	This antibody is expected to recognize both reported isoforms (NP_061834.1; NP_001001895.1).

ADDITIONAL INFORMATION

Note STRICTLY FOR FURTHER SCIENTIFIC RESEARCH USE ONLY (RUO). MUST NOT TO BE USED IN DIAGNOSTIC OR THERAPEUTIC APPLICATIONS.



STJ72562 (1µg/ml) staining of Human Spleen lysate (35µg protein in RIPA buffer). Primary incubation was 1 hour. Detected by chemiluminescence.