

Anti-Crot-Rat antibody (C-Term) (STJ72499)

GENERAL INFORMATION

Product Type	Primary antibodies
Applications	Pep-ELISA/WB/IHC
Host / Source	Goat
Reactivity	Rat

PRODUCT PROPERTIES

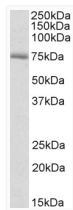
Clonality	Polyclonal
Concentration	0.5 mg/mL
Conjugation	Unconjugated
Purification	Purified from goat serum by ammonium sulphate precipitation followed by antigen affinity chromatography using the immunizing peptide.
Dilution Range	Peptide ELISA: antibody detection limit dilution 1:32000. WB: Approx 75kDa band observed in Rat Kidney lysates (calculated MW of 70.3kDa according to NP_114193.1). Recommended concentration: 0.3-1µg/ml. Primary incubation was 1 hour. IHC: Par
Formulation	0.5 mg/ml in Tris saline, 0.02% sodium azide, pH7.3 with 0.5% bovine serum albumin. NA
Isotype	IgG
Storage Instruction	Store at -20°C on receipt and minimise freeze-thaw cycles.

TARGET INFORMATION

Immunogen Region	C-Term
Immunogen Sequence	RSCLETDAEKLVE

ADDITIONAL INFORMATION

Note STRICTLY FOR FURTHER SCIENTIFIC RESEARCH USE ONLY (RUO). MUST NOT TO BE USED IN DIAGNOSTIC OR THERAPEUTIC APPLICATIONS.



STJ72499 (0.3 µg/ml) staining of Rat Kidney lysate (35 µg protein in RIPA buffer). Detected by chemiluminescence.