

Anti-CRTC2/TORC2 antibody (83-96) (STJ72495)

GENERAL INFORMATION

Product Type	Primary antibodies
Applications	Pep-ELISA/WB/IHC
Host / Source	Goat
Reactivity	Human/Mouse/Rat/Dog/Pig/Cow

PRODUCT PROPERTIES

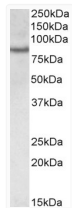
Clonality	Polyclonal
Concentration	0.5 mg/mL
Conjugation	Unconjugated
Purification	Purified from goat serum by ammonium sulphate precipitation followed by antigen affinity chromatography using the immunizing peptide.
Dilution Range	Peptide ELISA: antibody detection limit dilution 1:32000. WB: Approx 85kDa band observed in lysates of cell line Jurkat (calculated MW of 73.3kDa according to NP_859066.1). Recommended concentration: 0.3-1µg/ml. Primary incubation was 1 hour.
Formulation	0.5 mg/ml in Tris saline, 0.02% sodium azide, pH7.3 with 0.5% bovine serum albumin. NA
Isotype	IgG
Storage Instruction	Store at -20°C on receipt and minimise freeze-thaw cycles.

TARGET INFORMATION

Gene ID	200186
Gene Symbol	CRTC2
UniProt ID	CRTC2_HUMAN
Immunogen Region	83-96
Immunogen Sequence	EFQSPLHSPDSSR

ADDITIONAL INFORMATION

Note STRICTLY FOR FURTHER SCIENTIFIC RESEARCH USE ONLY (RUO). MUST NOT TO BE USED IN DIAGNOSTIC OR THERAPEUTIC APPLICATIONS.



STJ72495 (0.3µg/ml) staining of Jurkat lysate (35µg protein in RIPA buffer). Detected by chemiluminescence.