

## Anti-Calcipressin-1 antibody (Internal) (STJ72487)

### GENERAL INFORMATION

Product Type	Primary antibodies
Applications	Pep-ELISA/WB/IF/FC
Host / Source	Goat
Reactivity	Human/Mouse/Rat/Dog/Cow

### PRODUCT PROPERTIES

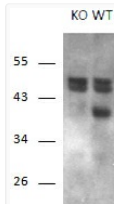
Clonality	Polyclonal
Concentration	0.5 mg/mL
Conjugation	Unconjugated
Purification	Purified from goat serum by ammonium sulphate precipitation followed by antigen affinity chromatography using the immunizing peptide.
Dilution Range	Peptide ELISA: antibody detection limit dilution 1:32000. WB: Approx. 40kDa band was observed in Human Cerebellum lysates (calculated MW of 31.9kDa according to NP_001272320.2). This molecular weight is observed by other commercial sources, and w
Formulation	0.5 mg/ml in Tris saline, 0.02% sodium azide, pH7.3 with 0.5% bovine serum albumin. NA
Isotype	IgG
Storage Instruction	Store at -20°C on receipt and minimise freeze-thaw cycles.

### TARGET INFORMATION

Gene ID	<a href="#">1827</a>
Gene Symbol	<a href="#">RCAN1</a>
UniProt ID	<a href="#">RCAN1_HUMAN</a>
Immunogen Region	Internal
Immunogen Sequence	HIGSSHLAPPND
Specificity	This antibody is expected to recognize all three reported isoforms (NP_004405.3; NP_981962.1; NP_981963.1).

### ADDITIONAL INFORMATION

Note STRICTLY FOR FURTHER SCIENTIFIC RESEARCH USE ONLY (RUO). MUST NOT TO BE USED IN DIAGNOSTIC OR THERAPEUTIC APPLICATIONS.



STJ72487 (1µg/ml) staining of Mouse Brain and KO Mouse Brain lysates (35µg protein in RIPA buffer). Primary incubation was 1 hour. Detected by chemiluminescence.