

Anti-SCOC antibody (Internal) (STJ72482)

GENERAL INFORMATION

Product Type	Primary antibodies
Applications	Pep-ELISA/WB
Host / Source	Goat
Reactivity	Human/Mouse/Rat/Dog/Cow

PRODUCT PROPERTIES

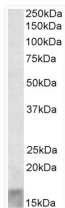
Clonality	Polyclonal
Concentration	0.5 mg/mL
Conjugation	Unconjugated
Purification	Purified from goat serum by ammonium sulphate precipitation followed by antigen affinity chromatography using the immunizing peptide.
Dilution Range	Peptide ELISA: antibody detection limit dilution 1:32000. WB: Approx 16kDa band observed in Human Skeletal Muscle lysates (calculated MW of 18.0kDa according to NP_001146956.1). Recommended concentration: 0.1-0.3µg/ml.
Formulation	0.5 mg/ml in Tris saline, 0.02% sodium azide, pH7.3 with 0.5% bovine serum albumin. NA
Isotype	IgG
Storage Instruction	Store at -20°C on receipt and minimise freeze-thaw cycles.

TARGET INFORMATION

Gene ID	60592
Gene Symbol	SCOC
UniProt ID	SCOC_HUMAN
Immunogen Region	Internal
Immunogen Sequence	HTLEDLSARVDVAVKE
Specificity	This antibody is expected to recognize all six reported isoforms (NP_001146956.1; NP_001147135.1; NP_001147024.1; NP_115936.2; NP_001147107.1; NP_001147162.1). Reported variants represent identical protein: NP_001147057.1, NP_001146918.1, NP_115936.2

ADDITIONAL INFORMATION

Note STRICTLY FOR FURTHER SCIENTIFIC RESEARCH USE ONLY (RUO). MUST NOT TO BE USED IN DIAGNOSTIC OR THERAPEUTIC APPLICATIONS.



STJ72482 (0.1 µg/ml) staining of Human Skeletal Muscle lysate (35 µg protein in RIPA buffer). Primary incubation was 1 hour. Detected by chemiluminescence.