

Anti-SLC47A2 antibody (Internal) (STJ72481)

GENERAL INFORMATION

| | |
|---------------|--------------------|
| Product Type | Primary antibodies |
| Applications | Pep-ELISA/WB |
| Host / Source | Goat |
| Reactivity | Human |

PRODUCT PROPERTIES

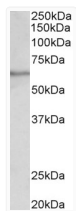
| | |
|---------------------|--|
| Clonality | Polyclonal |
| Concentration | 0.5 mg/mL |
| Conjugation | Unconjugated |
| Purification | Purified from goat serum by ammonium sulphate precipitation followed by antigen affinity chromatography using the immunizing peptide. |
| Dilution Range | Peptide ELISA: antibody detection limit dilution 1:32000. WB: Approx 60kDa band observed in Human Testis lysates (calculated MW of 61.0kDa according to NP_001093116.1). Recommended concentration: 0.1-0.3µg/ml. |
| Formulation | 0.5 mg/ml in Tris saline, 0.02% sodium azide, pH7.3 with 0.5% bovine serum albumin. NA |
| Isotype | IgG |
| Storage Instruction | Store at -20°C on receipt and minimise freeze-thaw cycles. |

TARGET INFORMATION

| | |
|--------------------|--|
| Gene ID | 146802 |
| Gene Symbol | SLC47A2 |
| UniProt ID | S47A2_HUMAN |
| Immunogen Region | Internal |
| Immunogen Sequence | QRAESTATRPGPEK |
| Specificity | This antibody is expected to recognize both reported isoforms (NP_690872.2; NP_001093116.1). |

ADDITIONAL INFORMATION

Note STRICTLY FOR FURTHER SCIENTIFIC RESEARCH USE ONLY (RUO). MUST NOT TO BE USED IN DIAGNOSTIC OR THERAPEUTIC APPLICATIONS.



STJ72481 (0.1 µg/ml) staining of Human Testis lysate (35 µg protein in RIPA buffer). Primary incubation was 1 hour. Detected by chemiluminescence.