

Anti-IDH1 antibody (Internal) (STJ72475)

GENERAL INFORMATION

Product Type	Primary antibodies
Applications	Pep-ELISA/WB
Host / Source	Goat
Reactivity	S.cerevisiae

PRODUCT PROPERTIES

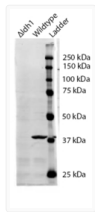
Clonality	Polyclonal
Concentration	0.5 mg/mL
Conjugation	Unconjugated
Purification	Purified from goat serum by ammonium sulphate precipitation followed by antigen affinity chromatography using the immunizing peptide.
Dilution Range	Peptide ELISA: antibody detection limit dilution 1:16000. WB: Approx 38kDa band observed in wildtype lysates of S.cerevisiae (calculated MW of 39.3kDa according to NP_014361.1). Recommended concentration: 0.3-1µg/ml.
Formulation	0.5 mg/ml in Tris saline, 0.02% sodium azide, pH7.3 with 0.5% bovine serum albumin. NA
Isotype	IgG
Storage Instruction	Store at-20°C on receipt and minimise freeze-thaw cycles.

TARGET INFORMATION

Immunogen Region	Internal
Immunogen Sequence	EPGSRHVGLDIKGQN

ADDITIONAL INFORMATION

Note STRICTLY FOR FURTHER SCIENTIFIC RESEARCH USE ONLY (RUO). MUST NOT TO BE USED IN DIAGNOSTIC OR THERAPEUTIC APPLICATIONS.



STJ72475 (0.5µg/ml) staining of S. cerevisiae S288c lysate (35µg protein in RIPA buffer). Primary incubation was 1 hour. Detected by chemiluminescence. The blocking buffer contained non-animal derived protein. Data kindly provided by Dr. F Reggiori, University of Utrecht, Netherlands