

Anti-Creatine transporter 1/SLC6A8 antibody (Internal) (STJ72473)

GENERAL INFORMATION

Product Type	Primary antibodies
Applications	Pep-ELISA/WB/IHC
Host / Source	Goat
Reactivity	Human/Mouse/Rat/Dog/Pig/Cow

PRODUCT PROPERTIES

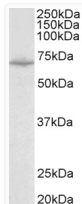
Clonality	Polyclonal
Concentration	0.5 mg/mL
Conjugation	Unconjugated
Purification	Purified from goat serum by ammonium sulphate precipitation followed by antigen affinity chromatography using the immunizing peptide.
Dilution Range	Peptide ELISA: antibody detection limit dilution 1:8000. WB: Approx 70kDa band observed in Mouse Heart lysates (calculated MW of 71.0kDa according to Mouse NP_598748.1). Recommended concentration: 0.1-0.3µg/ml. Primary incubation was 1 hour.
Formulation	0.5 mg/ml in Tris saline, 0.02% sodium azide, pH7.3 with 0.5% bovine serum albumin. NA
Isotype	IgG
Storage Instruction	Store at -20°C on receipt and minimise freeze-thaw cycles.

TARGET INFORMATION

Gene ID	6535
Gene Symbol	SLC6A8
UniProt ID	SC6A8_HUMAN
Immunogen Region	Internal
Immunogen Sequence	ASLANLTCDQLADRR
Specificity	This antibody is expected to recognize all reported isoforms (NP_005620.1; NP_001136277.1; NP_001136278.1).

ADDITIONAL INFORMATION

Note STRICTLY FOR FURTHER SCIENTIFIC RESEARCH USE ONLY (RUO). MUST NOT TO BE USED IN DIAGNOSTIC OR THERAPEUTIC APPLICATIONS.



STJ72473 (0.1 µg/ml) staining of Mouse Heart lysate (35 µg protein in RIPA buffer). Detected by chemiluminescence.