

Anti-parotid secretory protein-Mouse antibody (146-160) (STJ72466)

GENERAL INFORMATION

Product Type	Primary antibodies
Applications	Pep-ELISA/WB/ICC
Host / Source	Goat
Reactivity	Mouse

PRODUCT PROPERTIES

Clonality	Polyclonal
Concentration	0.5 mg/mL
Conjugation	Unconjugated
Purification	Purified from goat serum by ammonium sulphate precipitation followed by antigen affinity chromatography using the immunizing peptide.
Dilution Range	Peptide ELISA: antibody detection limit dilution 1:128000.
Formulation	0.5 mg/ml in Tris saline, 0.02% sodium azide, pH7.3 with 0.5% bovine serum albumin. NA
Isotype	IgG
Storage Instruction	Store at -20°C on receipt and minimise freeze-thaw cycles.

TARGET INFORMATION

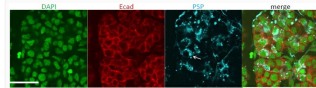
Immunogen Region	146-160
Immunogen Sequence	KTNAQTGLPEVTIGK

ADDITIONAL INFORMATION

Note STRICTLY FOR FURTHER SCIENTIFIC RESEARCH USE ONLY (RUO). MUST NOT TO BE USED IN DIAGNOSTIC OR THERAPEUTIC APPLICATIONS.



STJ72466 (1 µg/ml) staining of Mouse Mandibular Gland cell lysates (35 µg protein in RIPA buffer). Primary incubation was 1 hour. Detected by chemiluminescence (Super Signal).



STJ72466 (4 µg/ml) staining of Mouse Submandibular gland cells (in blue). Counter staining of Ecad in red and nuclear staining in green.