

Anti-POLDIP2 antibody (Internal) (STJ72452)

GENERAL INFORMATION

Product Type	Primary antibodies
Applications	Pep-ELISA/WB
Host / Source	Goat
Reactivity	Human/Mouse/Dog/Cow

PRODUCT PROPERTIES

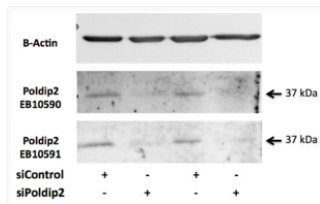
Clonality	Polyclonal
Concentration	0.5 mg/mL
Conjugation	Unconjugated
Purification	Purified from goat serum by ammonium sulphate precipitation followed by antigen affinity chromatography using the immunizing peptide.
Dilution Range	Peptide ELISA: antibody detection limit dilution 1:32000. WB: Approx 37kDa band observed in Rat Vascular Smooth Muscle Cells lysates (calculated MW of 15.2kDa according to Rat NP_001099286.1). The band diminished upon siRNA knock down. Recommended
Formulation	0.5 mg/ml in Tris saline, 0.02% sodium azide, pH7.3 with 0.5% bovine serum albumin. NA
Isotype	IgG
Storage Instruction	Store at -20°C on receipt and minimise freeze-thaw cycles.

TARGET INFORMATION

Gene ID	26073
Gene Symbol	POLDIP2
UniProt ID	PDIP2_HUMAN
Immunogen Region	Internal
Immunogen Sequence	RFERPDGSHFDVR

ADDITIONAL INFORMATION

Note STRICTLY FOR FURTHER SCIENTIFIC RESEARCH USE ONLY (RUO). MUST NOT TO BE USED IN DIAGNOSTIC OR THERAPEUTIC APPLICATIONS.



STJ72452 (0.5 µg/ml) staining of Rat VSMC lysate (35 µg protein in RIPA buffer). Primary incubation was overnight at 4°C. Detected by chemiluminescence.