

Anti-SIM2 antibody (Internal) (STJ72445)

GENERAL INFORMATION

Product Type	Primary antibodies
Applications	Pep-ELISA/WB
Host / Source	Goat
Reactivity	Human/Mouse/Rat

PRODUCT PROPERTIES

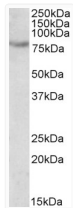
Clonality	Polyclonal
Concentration	0.5 mg/mL
Conjugation	Unconjugated
Purification	Purified from goat serum by ammonium sulphate precipitation followed by antigen affinity chromatography using the immunizing peptide.
Dilution Range	Peptide ELISA: antibody detection limit dilution 1:1000. WB: Approx 80kDa band observed in fetal Mouse Kidney lysates (calculated MW of 73.2kDa according to Human NP_005060.1) and 72.5kDa according to Mouse NP_035507.2. Recommended concentration:
Formulation	0.5 mg/ml in Tris saline, 0.02% sodium azide, pH7.3 with 0.5% bovine serum albumin. NA
Isotype	IgG
Storage Instruction	Store at -20°C on receipt and minimise freeze-thaw cycles.

TARGET INFORMATION

Gene ID	6493
Gene Symbol	SIM2
UniProt ID	SIM2_HUMAN
Immunogen Region	Internal
Immunogen Sequence	SDLLYTPSYS
Specificity	This antibody is expected to recognize all reported isoforms (NP_005060.1; NP_033664.2).

ADDITIONAL INFORMATION

Note STRICTLY FOR FURTHER SCIENTIFIC RESEARCH USE ONLY (RUO). MUST NOT TO BE USED IN DIAGNOSTIC OR THERAPEUTIC APPLICATIONS.



STJ72445 (0.5 µg/ml) staining of fetal Mouse kidney lysate (35 µg protein in RIPA buffer). Primary incubation was 1 hour. Detected by chemiluminescence.