

## Anti-PCBP1 antibody (223-234) (STJ72417)

### GENERAL INFORMATION

Product Type	Primary antibodies
Applications	Pep-ELISA/WB
Host / Source	Goat
Reactivity	Human/Mouse/Rat/Dog

### PRODUCT PROPERTIES

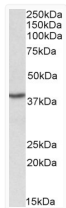
Clonality	Polyclonal
Concentration	0.5 mg/mL
Conjugation	Unconjugated
Purification	Purified from goat serum by ammonium sulphate precipitation followed by antigen affinity chromatography using the immunizing peptide.
Dilution Range	Peptide ELISA: antibody detection limit dilution 1:8000. WB: Approx 38kDa band observed in Human Peripheral Blood Nucleocytes lysates (calculated MW of 37.5kDa according to NP_006187.2). The 38kDa was also observed in Rat Spleen while a 37kDa band
Formulation	0.5 mg/ml in Tris saline, 0.02% sodium azide, pH7.3 with 0.5% bovine serum albumin. NA
Isotype	IgG
Storage Instruction	Store at -20°C on receipt and minimise freeze-thaw cycles.

### TARGET INFORMATION

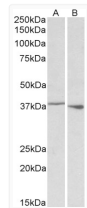
Gene ID	<a href="#">5093</a>
Gene Symbol	<a href="#">PCBP1</a>
UniProt ID	<a href="#">PCBP1_HUMAN</a>
Immunogen Region	223-234
Immunogen Sequence	SIQGQHTISPLD

### ADDITIONAL INFORMATION

Note **STRICTLY FOR FURTHER SCIENTIFIC RESEARCH USE ONLY (RUO). MUST NOT TO BE USED IN DIAGNOSTIC OR THERAPEUTIC APPLICATIONS.**



STJ72417 (0. 1µg/ml) staining of PBMC lysate (35µg protein in RIPA buffer). Primary incubation was 1 hour. Detected by chemiluminescence.



STJ72417 (0. 1µg/ml) staining of Rat Spleen (A) and Thymus (B) lysate (35µg protein in RIPA buffer). Primary incubation was 1 hour. Detected by chemiluminescence.