

## Anti-DCTN3 antibody (Internal) (STJ72400)

### GENERAL INFORMATION

Product Type	Primary antibodies
Applications	Pep-ELISA/WB/IHC/FC
Host / Source	Goat
Reactivity	Human/Mouse/Rat/Dog/Cow

### PRODUCT PROPERTIES

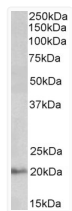
Clonality	Polyclonal
Concentration	0.5 mg/mL
Conjugation	Unconjugated
Purification	Purified from goat serum by ammonium sulphate precipitation followed by antigen affinity chromatography using the immunizing peptide.
Dilution Range	Peptide ELISA: antibody detection limit dilution 1:16000. WB: Approx 20kDa band observed in Human Liver lysates, and approx. 18kDa in Rat Kidney lysates and in preliminary testing of Mouse Kidney lysate (calculated MW of 19.5kDa according to Huma
Formulation	0.5 mg/ml in Tris saline, 0.02% sodium azide, pH7.3 with 0.5% bovine serum albumin. NA
Isotype	IgG
Storage Instruction	Store at -20°C on receipt and minimise freeze-thaw cycles.

### TARGET INFORMATION

Gene ID	<a href="#">11258</a>
Gene Symbol	<a href="#">DCTN3</a>
UniProt ID	<a href="#">DCTN3_HUMAN</a>
Immunogen Region	Internal
Immunogen Sequence	QVALGNISSKRE
Specificity	This antibody is expected to recognize both reported isoforms (NP_009165.1; NP_077324.1).

### ADDITIONAL INFORMATION

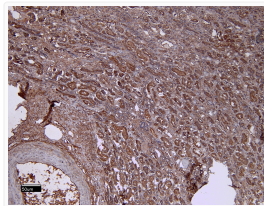
Note **STRICTLY FOR FURTHER SCIENTIFIC RESEARCH USE ONLY (RUO). MUST NOT TO BE USED IN DIAGNOSTIC OR THERAPEUTIC APPLICATIONS.**



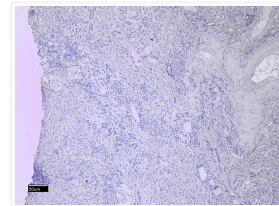
STJ72400 (0.03 µg/ml) staining of Human Kidney lysate (35 µg protein in RIPA buffer). Primary incubation was 1 hour. Detected by chemiluminescence.



STJ72400 (0.2 µg/ml) staining of Mouse (A) and Rat (B) Skeletal Muscle lysates (35 µg protein in RIPA buffer). Primary incubation was 1 hour. Detected by chemiluminescence.



STJ72400 (8 µg/ml) staining of paraffin embedded Human Kidney. Heat induced antigen retrieval with citrate buffer pH 6, HRP-staining.



STJ72400 Negative Control showing staining of paraffin embedded Human Kidney, with no primary antibody.