

## Anti-ALDH6A1 antibody (262-272) (STJ72396)

### GENERAL INFORMATION

Product Type	Primary antibodies
Applications	Pep-ELISA/WB/IHC
Host / Source	Goat
Reactivity	Human/Mouse/Rat/Dog/Cow/Pig

### PRODUCT PROPERTIES

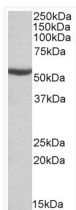
Clonality	Polyclonal
Concentration	0.5 mg/mL
Conjugation	Unconjugated
Purification	Purified from goat serum by ammonium sulphate precipitation followed by antigen affinity chromatography using the immunizing peptide.
Dilution Range	Peptide ELISA: antibody detection limit dilution 1:32000. WB: Approx 55kDa band observed in Human and Mouse Kidney lysates (calculated MW of 57.8kDa according to NP_005580.1). Recommended concentration: 0.1-0.3µg/ml. IHC: Paraffin embedded Hu
Formulation	0.5 mg/ml in Tris saline, 0.02% sodium azide, pH7.3 with 0.5% bovine serum albumin. NA
Isotype	IgG
Storage Instruction	Store at -20°C on receipt and minimise freeze-thaw cycles.

### TARGET INFORMATION

Gene ID	<a href="#">4329</a>
Gene Symbol	<a href="#">ALDH6A1</a>
UniProt ID	<a href="#">MMSA_HUMAN</a>
Immunogen Region	262-272
Immunogen Sequence	SNKAGEYIFER

### ADDITIONAL INFORMATION

Note STRICTLY FOR FURTHER SCIENTIFIC RESEARCH USE ONLY (RUO). MUST NOT TO BE USED IN DIAGNOSTIC OR THERAPEUTIC APPLICATIONS.



STJ72396 (0.1 µg/ml) staining of Mouse Kidney lysate (35 µg protein in RIPA buffer). Primary incubation was 1 hour. Detected by chemiluminescence.