

## Anti-38231 antibody (33-44) (STJ72390)

### GENERAL INFORMATION

Product Type	Primary antibodies
Applications	Pep-ELISA/WB/FC
Host / Source	Goat
Reactivity	Human/Mouse

### PRODUCT PROPERTIES

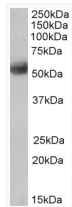
Clonality	Polyclonal
Concentration	0.5 mg/mL
Conjugation	Unconjugated
Purification	Purified from goat serum by ammonium sulphate precipitation followed by antigen affinity chromatography using the immunizing peptide.
Dilution Range	Peptide ELISA: antibody detection limit dilution 1:16000. WB: Approx 55kDa band observed in nuclear lysates of cell lines Jurkat and in LNCaP cell lysates, 50-55kDa in Human Cerebellum lysates, and approx. 50kDa in Mouse Brain lysates (calculated)
Formulation	0.5 mg/ml in Tris saline, 0.02% sodium azide, pH7.3 with 0.5% bovine serum albumin. NA
Isotype	IgG
Storage Instruction	Store at -20°C on receipt and minimise freeze-thaw cycles.

### TARGET INFORMATION

Gene ID	<a href="#">5414</a>
Gene Symbol	<a href="#">SEPTIN4</a>
UniProt ID	<a href="#">SEPT4_HUMAN</a>
Immunogen Region	33-44
Immunogen Sequence	ELSKFVKDFSGN
Specificity	This antibody is expected to recognize all reported isoforms (NP_004565.1; NP_536340.1; NP_536341.1, NP_001185642.1). Amino acid numbering in name refers to NP_004565.1 sequence.

### ADDITIONAL INFORMATION

Note STRICTLY FOR FURTHER SCIENTIFIC RESEARCH USE ONLY (RUO). MUST NOT TO BE USED IN DIAGNOSTIC OR THERAPEUTIC APPLICATIONS.



STJ72390 (0.5 µg/ml) staining of Human Cerebellum lysate (35 µg protein in RIPA buffer). Primary incubation was 1 hour. Detected by chemiluminescence.