

Anti-CYPOR antibody (Internal) (STJ72352)

GENERAL INFORMATION

Product Type	Primary antibodies
Applications	Pep-ELISA/WB/IHC
Host / Source	Goat
Reactivity	Human/Mouse/Rat/Dog/Cow/Pig

PRODUCT PROPERTIES

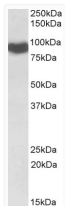
Clonality	Polyclonal
Concentration	0.5 mg/mL
Conjugation	Unconjugated
Purification	Purified from goat serum by ammonium sulphate precipitation followed by antigen affinity chromatography using the immunizing peptide.
Dilution Range	Peptide ELISA: antibody detection limit dilution 1:16000. WB: Approx 90kDa band observed in Human, Mouse and Rat Liver lysates (calculated MW of 77.0kDa according to NP_000932.3). Recommended concentration: 0.1-0.3µg/ml. Primary incubation was 1
Formulation	0.5 mg/ml in Tris saline, 0.02% sodium azide, pH7.3 with 0.5% bovine serum albumin. NA
Isotype	IgG
Storage Instruction	Store at -20°C on receipt and minimise freeze-thaw cycles.

TARGET INFORMATION

Gene ID	5447
Gene Symbol	POR
UniProt ID	NCPR_HUMAN
Immunogen Region	Internal
Immunogen Sequence	TNPPRTNVLYE

ADDITIONAL INFORMATION

Note STRICTLY FOR FURTHER SCIENTIFIC RESEARCH USE ONLY (RUO). MUST NOT TO BE USED IN DIAGNOSTIC OR THERAPEUTIC APPLICATIONS.



STJ72352 (0.1 µg/ml) staining of Rat Liver lysate (35 µg protein in RIPA buffer). Detected by chemiluminescence.