

Anti-MOGAT2 antibody (Internal) (STJ72346)

GENERAL INFORMATION

Product Type	Primary antibodies
Applications	Pep-ELISA/WB/IHC
Host / Source	Goat
Reactivity	Human/Dog/Cow/Pig

PRODUCT PROPERTIES

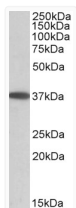
Clonality	Polyclonal
Concentration	0.5 mg/mL
Conjugation	Unconjugated
Purification	Purified from goat serum by ammonium sulphate precipitation followed by antigen affinity chromatography using the immunizing peptide.
Dilution Range	Peptide ELISA: antibody detection limit dilution 1:32000. WB: Approx 37kDa band observed in Human Colon, Duodenum and Ileum lysates (calculated MW of 38.2kDa according to NP_079374.2). Recommended concentration: 0.05-0.2µg/ml. Primary incubation
Formulation	0.5 mg/ml in Tris saline, 0.02% sodium azide, pH7.3 with 0.5% bovine serum albumin. NA
Isotype	IgG
Storage Instruction	Store at -20°C on receipt and minimise freeze-thaw cycles.

TARGET INFORMATION

Gene ID	80168
Gene Symbol	MOGAT2
UniProt ID	MOGT2_HUMAN
Immunogen Region	Internal
Immunogen Sequence	KESAAHILNRK

ADDITIONAL INFORMATION

Note STRICTLY FOR FURTHER SCIENTIFIC RESEARCH USE ONLY (RUO). MUST NOT TO BE USED IN DIAGNOSTIC OR THERAPEUTIC APPLICATIONS.



STJ72346 (0.05µg/ml) staining of Human Duodenum lysate (35µg protein in RIPA buffer). Detected by chemiluminescence.