

## Anti-PRKAA2 antibody (Internal) (STJ72336)

### GENERAL INFORMATION

Product Type	Primary antibodies
Applications	Pep-ELISA/WB
Host / Source	Goat
Reactivity	Human/Mouse/Rat/Dog/Pig/Cow

### PRODUCT PROPERTIES

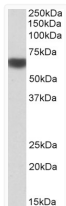
Clonality	Polyclonal
Concentration	0.5 mg/mL
Conjugation	Unconjugated
Purification	Purified from goat serum by ammonium sulphate precipitation followed by antigen affinity chromatography using the immunizing peptide.
Dilution Range	Peptide ELISA: antibody detection limit dilution 1:16000. WB: Approx 65kDa band observed in Human Heart and Liver lysates and in Mouse and Rat Heart lysates (calculated MW of 62.3kDa according to NP_006243.2). Recommended concentration: 0.3-1µg/m
Formulation	0.5 mg/ml in Tris saline, 0.02% sodium azide, pH7.3 with 0.5% bovine serum albumin. NA
Isotype	IgG
Storage Instruction	Store at -20°C on receipt and minimise freeze-thaw cycles.

### TARGET INFORMATION

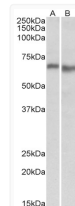
Gene ID	<a href="#">5563</a>
Gene Symbol	<a href="#">PRKAA2</a>
UniProt ID	<a href="#">AAPK2_HUMAN</a>
Immunogen Region	Internal
Immunogen Sequence	CPLDALNTTKP

### ADDITIONAL INFORMATION

Note STRICTLY FOR FURTHER SCIENTIFIC RESEARCH USE ONLY (RUO). MUST NOT TO BE USED IN DIAGNOSTIC OR THERAPEUTIC APPLICATIONS.



STJ72336 (1µg/ml) staining of Human Liver lysate (35µg protein in RIPA buffer). Detected by chemiluminescence.



STJ72336 (0.3µg/ml) staining of Mouse (A) and Rat (B) Heart lysate (35µg protein in RIPA buffer). Detected by chemiluminescence.