

Anti-CSF1R antibody (734-744) (STJ72333)

GENERAL INFORMATION

Product Type	Primary antibodies
Applications	Pep-ELISA/WB/IHC
Host / Source	Goat
Reactivity	Human/Dog/Cow

PRODUCT PROPERTIES

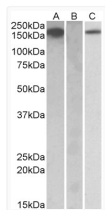
Clonality	Polyclonal
Concentration	0.5 mg/mL
Conjugation	Unconjugated
Purification	Purified from goat serum by ammonium sulphate precipitation followed by antigen affinity chromatography using the immunizing peptide.
Dilution Range	Peptide ELISA: antibody detection limit dilution 1:8000. WB: Approx. 100kDa band observed in lysates of cell line THP-1 (calculated MW. of 108kDa according to NP_005202.2). Recommended concentration: 1.5-3µg/ml. Primary incubation 1 hour at room
Formulation	0.5 mg/ml in Tris saline, 0.02% sodium azide, pH7.3 with 0.5% bovine serum albumin. NA
Isotype	IgG
Storage Instruction	Store at -20°C on receipt and minimise freeze-thaw cycles.

TARGET INFORMATION

Gene ID	1436
Gene Symbol	CSF1R
UniProt ID	CSF1R_HUMAN
Immunogen Region	734-744
Immunogen Sequence	NDSFSEQDLDK

ADDITIONAL INFORMATION

Note STRICTLY FOR FURTHER SCIENTIFIC RESEARCH USE ONLY (RUO). MUST NOT TO BE USED IN DIAGNOSTIC OR THERAPEUTIC APPLICATIONS.



HEK293 lysate (10ug protein in RIPA buffer) overexpressing Human CSF1R with C-terminal MYC tag probed with STJ72333 (1ug/ml) in Lane A and probed with anti-MYC Tag (1/1000) in lane C. Mock-transfected HEK293 probed with STJ72333 (1mg/ml) in Lane B. Primary incubations were for 1 hour. Detected by chemiluminescence.