

## Anti-SPINT2 antibody (C-Term) (STJ72324)

### GENERAL INFORMATION

Product Type	Primary antibodies
Applications	Pep-ELISA/WB
Host / Source	Goat
Reactivity	Human/Rat/Mouse/Dog/Cow

### PRODUCT PROPERTIES

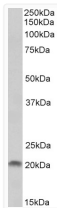
Clonality	Polyclonal
Concentration	0.5 mg/mL
Conjugation	Unconjugated
Purification	Purified from goat serum by ammonium sulphate precipitation followed by antigen affinity chromatography using the immunizing peptide.
Dilution Range	Peptide ELISA: antibody detection limit dilution 1:1000. WB: Approx 20kDa band observed in Human Placenta lysates (calculated MW of 21.8kDa according to NP_001159575.1). Recommended concentration: 1-3µg/ml. Primary incubation 1 hour at room temperature
Formulation	0.5 mg/ml in Tris saline, 0.02% sodium azide, pH7.3 with 0.5% bovine serum albumin. NA
Isotype	IgG
Storage Instruction	Store at -20°C on receipt and minimise freeze-thaw cycles.

### TARGET INFORMATION

Gene ID	<a href="#">10653</a>
Gene Symbol	<a href="#">SPINT2</a>
UniProt ID	<a href="#">SPIT2_HUMAN</a>
Immunogen Region	C-Term
Immunogen Sequence	SGDDKEQLVKNT
Specificity	This antibody is expected to recognize to recognize both reported isoforms (NP_066925.1; NP_001159575.1).

### ADDITIONAL INFORMATION

Note STRICTLY FOR FURTHER SCIENTIFIC RESEARCH USE ONLY (RUO). MUST NOT TO BE USED IN DIAGNOSTIC OR THERAPEUTIC APPLICATIONS.



STJ72324 (1µg/ml) staining of Human Placenta lysate (35µg protein in RIPA buffer). Detected by chemiluminescence.