

Anti-SNAP23 antibody (135-144) (STJ72318)

GENERAL INFORMATION

Product Type	Primary antibodies
Applications	Pep-ELISA/WB
Host / Source	Goat
Reactivity	Human/Mouse/Rat/Dog/Cow

PRODUCT PROPERTIES

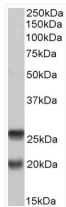
Clonality	Polyclonal
Concentration	0.5 mg/mL
Conjugation	Unconjugated
Purification	Purified from goat serum by ammonium sulphate precipitation followed by antigen affinity chromatography using the immunizing peptide.
Dilution Range	Peptide ELISA: antibody detection limit dilution 1:2000. WB: Approx 20+26kDa bands observed in Human Peripheral Blood Mononucleocytes lysates (calculated MW of 17.8kDa according to NP_570710.1 and of 23.4kDa according to NP_003816.2). Recommended
Formulation	0.5 mg/ml in Tris saline, 0.02% sodium azide, pH7.3 with 0.5% bovine serum albumin. NA
Isotype	IgG
Storage Instruction	Store at -20°C on receipt and minimise freeze-thaw cycles.

TARGET INFORMATION

Gene ID	8773
Gene Symbol	SNAP23
UniProt ID	SNP23_HUMAN
Immunogen Region	135-144
Immunogen Sequence	TDKADTNRDR
Specificity	This antibody is expected to recognize both isoforms (NP_003816.2; NP_570710.1). Amino acid numbering in name refers to NP_003816.2 sequence.

ADDITIONAL INFORMATION

Note STRICTLY FOR FURTHER SCIENTIFIC RESEARCH USE ONLY (RUO). MUST NOT TO BE USED IN DIAGNOSTIC OR THERAPEUTIC APPLICATIONS.



STJ72318 (0.2 µg/ml) staining of PBMC lysate (35 µg protein in RIPA buffer). Primary incubation was 1 hour. Detected by chemiluminescence.