

Anti-ARHGDIG antibody (C-Term) (STJ72317)

GENERAL INFORMATION

Product Type	Primary antibodies
Applications	Pep-ELISA/WB/IHC
Host / Source	Goat
Reactivity	Human/Mouse/Rat/Dog/Cow

PRODUCT PROPERTIES

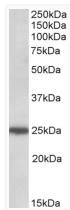
Clonality	Polyclonal
Concentration	0.5 mg/mL
Conjugation	Unconjugated
Purification	Purified from goat serum by ammonium sulphate precipitation followed by antigen affinity chromatography using the immunizing peptide.
Dilution Range	Peptide ELISA: antibody detection limit dilution 1:16000. WB: Approx 25kDa band observed in lysates of cell line HeLa (calculated MW of 25.1kDa according to NP_001167.2). Recommended concentration: 0.5-2µg/ml. Primary incubation was 1 hour.
Formulation	0.5 mg/ml in Tris saline, 0.02% sodium azide, pH7.3 with 0.5% bovine serum albumin. NA
Isotype	IgG
Storage Instruction	Store at -20°C on receipt and minimise freeze-thaw cycles.

TARGET INFORMATION

Gene ID	398
Gene Symbol	ARHGDIG
UniProt ID	GDIR3_HUMAN
Immunogen Region	C-Term
Immunogen Sequence	EAVPEYRAPGRK

ADDITIONAL INFORMATION

Note STRICTLY FOR FURTHER SCIENTIFIC RESEARCH USE ONLY (RUO). MUST NOT TO BE USED IN DIAGNOSTIC OR THERAPEUTIC APPLICATIONS.



STJ72317 (0.5 µg/ml) staining of HeLa lysate (35 µg protein in RIPA buffer). Detected by chemiluminescence.