

Anti-ARHGDI2 antibody (Internal) (STJ72316)

GENERAL INFORMATION

Product Type	Primary antibodies
Applications	Pep-ELISA/WB
Host / Source	Goat
Reactivity	Human/Mouse/Dog/Cow

PRODUCT PROPERTIES

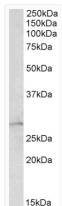
Clonality	Polyclonal
Concentration	0.5 mg/mL
Conjugation	Unconjugated
Purification	Purified from goat serum by ammonium sulphate precipitation followed by antigen affinity chromatography using the immunizing peptide.
Dilution Range	Peptide ELISA: antibody detection limit dilution 1:8000. WB: Approx 28kDa band observed in Mouse and Rat Lung lysates (calculated MW of 23.4kDa according to Mouse NP_598557.3). This molecular weight is routinely observed by other sources. Recomm
Formulation	0.5 mg/ml in Tris saline, 0.02% sodium azide, pH7.3 with 0.5% bovine serum albumin. NA
Isotype	IgG
Storage Instruction	Store at -20°C on receipt and minimise freeze-thaw cycles.

TARGET INFORMATION

Gene ID	396
Gene Symbol	ARHGDI2
UniProt ID	GDIR1_HUMAN
Immunogen Region	Internal
Immunogen Sequence	QLAQIAENE

ADDITIONAL INFORMATION

Note STRICTLY FOR FURTHER SCIENTIFIC RESEARCH USE ONLY (RUO). MUST NOT TO BE USED IN DIAGNOSTIC OR THERAPEUTIC APPLICATIONS.



STJ72316 (1 µg/ml) staining of Mouse Lung lysate (35 µg protein in RIPA buffer). Primary incubation was 1 hour. Detected by chemiluminescence.