

Anti-ARHGDIB antibody (N-Term) (STJ72315)

GENERAL INFORMATION

Product Type	Primary antibodies
Applications	Pep-ELISA/WB
Host / Source	Goat
Reactivity	Human/Cow

PRODUCT PROPERTIES

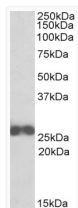
Clonality	Polyclonal
Concentration	0.5 mg/mL
Conjugation	Unconjugated
Purification	Purified from goat serum by ammonium sulphate precipitation followed by antigen affinity chromatography using the immunizing peptide.
Dilution Range	Peptide ELISA: antibody detection limit dilution 1:4000. WB: Approx 26kDa band observed in lysates of cell line Jurkat (calculated MW of 23.0kDa according to NP_001166.3). Recommended concentration: 1-3µg/ml.
Formulation	0.5 mg/ml in Tris saline, 0.02% sodium azide, pH7.3 with 0.5% bovine serum albumin. NA
Isotype	IgG
Storage Instruction	Store at -20°C on receipt and minimise freeze-thaw cycles.

TARGET INFORMATION

Gene ID	397
Gene Symbol	ARHGDIB
UniProt ID	GDIR2_HUMAN
Immunogen Region	N-Term
Immunogen Sequence	TEKAPEPHVE

ADDITIONAL INFORMATION

Note STRICTLY FOR FURTHER SCIENTIFIC RESEARCH USE ONLY (RUO). MUST NOT TO BE USED IN DIAGNOSTIC OR THERAPEUTIC APPLICATIONS.



STJ72315 (0.1 µg/ml) staining of Jurkat lysate (35 µg protein in RIPA buffer). Primary incubation was 1 hour. Detected by chemiluminescence.