

Anti-ETFB/FP585 antibody (152-165) (STJ72289)

GENERAL INFORMATION

Product Type	Primary antibodies
Applications	Pep-ELISA/WB/IHC
Host / Source	Goat
Reactivity	Human/Mouse/Rat/Dog/Cow

PRODUCT PROPERTIES

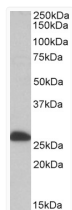
Clonality	Polyclonal
Concentration	0.5 mg/mL
Conjugation	Unconjugated
Purification	Purified from goat serum by ammonium sulphate precipitation followed by antigen affinity chromatography using the immunizing peptide.
Dilution Range	Peptide ELISA: antibody detection limit dilution 1:8000. WB: Approx 27kDa band observed in Human, Mouse and Rat Liver lysates (calculated MW of 27.8kDa according to NP_001976.1). Recommended concentration: 1-3µg/ml. IHC: In paraffin embedded
Formulation	0.5 mg/ml in Tris saline, 0.02% sodium azide, pH7.3 with 0.5% bovine serum albumin. NA
Isotype	IgG
Storage Instruction	Store at -20°C on receipt and minimise freeze-thaw cycles.

TARGET INFORMATION

Gene ID	2109
Gene Symbol	ETFB
UniProt ID	ETFB_HUMAN
Immunogen Region	152-165
Immunogen Sequence	QVTLEGDKLKVERE
Specificity	This antibody is expected to recognize both reported isoforms (NP_001976.1; NP_001014763.1). Amino acid numbering in the name above refers to NP_001976.1).

ADDITIONAL INFORMATION

Note STRICTLY FOR FURTHER SCIENTIFIC RESEARCH USE ONLY (RUO). MUST NOT TO BE USED IN DIAGNOSTIC OR THERAPEUTIC APPLICATIONS.



STJ72289 (0.1 µg/ml) staining of Human Liver lysate (35 µg protein in RIPA buffer). Primary incubation was 1 hour. Detected by chemiluminescence.