

## Anti-ALDH3A2 antibody (Internal) (STJ72277)

### GENERAL INFORMATION

Product Type	Primary antibodies
Applications	Pep-ELISA/WB/IHC
Host / Source	Goat
Reactivity	Mouse/Rat

### PRODUCT PROPERTIES

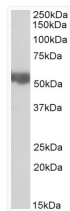
Clonality	Polyclonal
Concentration	0.5 mg/mL
Conjugation	Unconjugated
Purification	Purified from goat serum by ammonium sulphate precipitation followed by antigen affinity chromatography using the immunizing peptide.
Dilution Range	Peptide ELISA: antibody detection limit dilution 1:32000. WB: Approx 55kDa band observed in Rat Liver lysates (calculated MW of 54.1kDa according to Rat NP_113919.2). Recommended concentration: 0.03-0.1µg/ml. Primary incubation was 1 hour. IH
Formulation	0.5 mg/ml in Tris saline, 0.02% sodium azide, pH7.3 with 0.5% bovine serum albumin. NA
Isotype	IgG
Storage Instruction	Store at -20°C on receipt and minimise freeze-thaw cycles.

### TARGET INFORMATION

Immunogen Region	Internal
Immunogen Sequence	KGLKGESVNKLRY
Specificity	This antibody is expected to recognize both reported isoforms (NP_001026976.1; NP_000373.1).

### ADDITIONAL INFORMATION

Note STRICTLY FOR FURTHER SCIENTIFIC RESEARCH USE ONLY (RUO). MUST NOT TO BE USED IN DIAGNOSTIC OR THERAPEUTIC APPLICATIONS.



STJ72277 (0.03µg/ml) staining of Rat Liver lysate (35µg protein in RIPA buffer). Detected by chemiluminescence.