

Anti-CDH11 antibody (26-37) (STJ72255)

GENERAL INFORMATION

Product Type	Primary antibodies
Applications	Pep-ELISA/WB-Trf
Host / Source	Goat
Reactivity	Human/Mouse/Rat/Dog/Cow

PRODUCT PROPERTIES

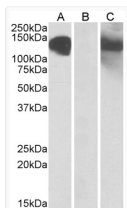
Clonality	Polyclonal
Concentration	0.5 mg/mL
Conjugation	Unconjugated
Purification	Purified from goat serum by ammonium sulphate precipitation followed by antigen affinity chromatography using the immunizing peptide.
Dilution Range	Peptide ELISA: antibody detection limit dilution 1:2000. WB: In transfected HEK293 transiently expressing full-length Human CDH11 (myc and DYKDDDDK tagged) , a band of approx. 130kDa was observed. No bands were observed in mock-transfected HEK293
Formulation	0.5 mg/ml in Tris saline, 0.02% sodium azide, pH7.3 with 0.5% bovine serum albumin. NA
Isotype	IgG
Storage Instruction	Store at -20°C on receipt and minimise freeze-thaw cycles.

TARGET INFORMATION

Gene ID	1009
Gene Symbol	CDH11
UniProt ID	CAD11_HUMAN
Immunogen Region	26-37
Immunogen Sequence	ERRGHLRPSFHG

ADDITIONAL INFORMATION

Note STRICTLY FOR FURTHER SCIENTIFIC RESEARCH USE ONLY (RUO). MUST NOT TO BE USED IN DIAGNOSTIC OR THERAPEUTIC APPLICATIONS.



HEK293 lysate (10ug protein in RIPA buffer) overexpressing Human CDH11 with C-terminal MYC tag probed with STJ72255 (1ug/ml) in Lane A and probed with anti-MYC Tag (1/1000) in lane C. Mock-transfected HEK293 probed with STJ72255 (1mg/ml) in Lane B. Primary incubations were for 1 hour. Detected by chemiluminescence.