

Anti-CUL2 antibody (C-Term) (STJ72251)

GENERAL INFORMATION

Product Type	Primary antibodies
Applications	Pep-ELISA/WB/IHC
Host / Source	Goat
Reactivity	Human/Mouse/Rat/Dog/Cow

PRODUCT PROPERTIES

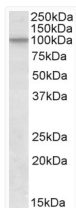
Clonality	Polyclonal
Concentration	0.5 mg/mL
Conjugation	Unconjugated
Purification	Purified from goat serum by ammonium sulphate precipitation followed by antigen affinity chromatography using the immunizing peptide.
Dilution Range	Peptide ELISA: antibody detection limit dilution 1:8000. WB: Approx 100kDa band observed in lysates of cell line NIH3T3 (calculated MW of 87.0kDa according to Human NP_003582.2 and of 86.9kDa according to Mouse NP_083678.2). Recommended concentra
Formulation	0.5 mg/ml in Tris saline, 0.02% sodium azide, pH7.3 with 0.5% bovine serum albumin. NA
Isotype	IgG
Storage Instruction	Store at -20°C on receipt and minimise freeze-thaw cycles.

TARGET INFORMATION

Gene ID	8453
Gene Symbol	CUL2
UniProt ID	CUL2_HUMAN
Immunogen Region	C-Term
Immunogen Sequence	QYIERSQASADE

ADDITIONAL INFORMATION

Note STRICTLY FOR FURTHER SCIENTIFIC RESEARCH USE ONLY (RUO). MUST NOT TO BE USED IN DIAGNOSTIC OR THERAPEUTIC APPLICATIONS.



STJ72251 (1 µg/ml) staining of NIH3T3 lysate (35 µg protein in RIPA buffer). Detected by chemiluminescence.