

Anti-MEIS2 antibody (Internal) (STJ72247)

GENERAL INFORMATION

Product Type	Primary antibodies
Applications	Pep-ELISA/WB
Host / Source	Goat
Reactivity	Human/Mouse/Dog/Cow

PRODUCT PROPERTIES

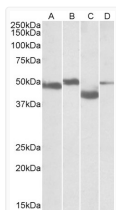
Clonality	Polyclonal
Concentration	0.5 mg/mL
Conjugation	Unconjugated
Purification	Purified from goat serum by ammonium sulphate precipitation followed by antigen affinity chromatography using the immunizing peptide.
Dilution Range	Peptide ELISA: antibody detection limit dilution 1:16000. WB: Approx 50kDa bands observed in Rat Brain and Rat Thymus lysates, 48kDa band in Mouse Brain and 40kDa in Mouse Thymus (calculated MW of 51.8kDa according to Human NP_733775.1 and Mouse
Formulation	0.5 mg/ml in Tris saline, 0.02% sodium azide, pH7.3 with 0.5% bovine serum albumin. NA
Isotype	IgG
Storage Instruction	Store at -20°C on receipt and minimise freeze-thaw cycles.

TARGET INFORMATION

Gene ID	4212
Gene Symbol	MEIS2
UniProt ID	MEIS2_HUMAN
Immunogen Region	Internal
Immunogen Sequence	QSNRAGFLLDPSVSQ
Specificity	This antibody is expected to recognize reported Human isoforms a (NP_733777.1) , c (NP_733775.1) , and g (NP_758526.1) , and reported Mouse isoforms 3, 4 and 5 (NP_001153039.1, NP_001153040.1, NP_001153041.1). NB: The immunizing peptide shows no over

ADDITIONAL INFORMATION

Note STRICTLY FOR FURTHER SCIENTIFIC RESEARCH USE ONLY (RUO). MUST NOT TO BE USED IN DIAGNOSTIC OR THERAPEUTIC APPLICATIONS.



STJ72247 (0.1 µg/ml) staining of Mouse Brain (lane A) , Rat Brain (lane B) , Mouse Thymus (lane C) and Rat Thymus (lane D) lysates (35 µg protein in RIPA buffer). Primary incubation was 1 hour. Detected by chemiluminescence.