

## Anti-CETP antibody (N-Term) (STJ72201)

### GENERAL INFORMATION

Product Type	Primary antibodies
Applications	Pep-ELISA/WB
Host / Source	Goat
Reactivity	Human

### PRODUCT PROPERTIES

Clonality	Polyclonal
Concentration	0.5 mg/mL
Conjugation	Unconjugated
Purification	Purified from goat serum by ammonium sulphate precipitation followed by antigen affinity chromatography using the immunizing peptide.
Dilution Range	Peptide ELISA: antibody detection limit dilution 1:64000. WB: Approx 48kDa band observed in lysates of cell line HepG2 (calculated MW of 47.9kDa according to NP_001273014.1. Recommended concentration: 0.3-1µg/ml. Primary incubation 1 hour at room
Formulation	0.5 mg/ml in Tris saline, 0.02% sodium azide, pH7.3 with 0.5% bovine serum albumin. NA
Isotype	IgG
Storage Instruction	Store at -20°C on receipt and minimise freeze-thaw cycles.

### TARGET INFORMATION

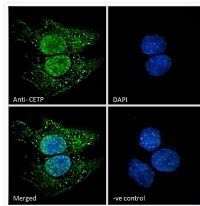
Gene ID	<a href="#">1071</a>
Gene Symbol	<a href="#">CETP</a>
UniProt ID	<a href="#">CETP_HUMAN</a>
Immunogen Region	N-Term
Immunogen Sequence	GNAHACSKGTSHEA
Specificity	This antibody is expected to recognise isoform s1 and 2.

### ADDITIONAL INFORMATION

Note **STRICTLY FOR FURTHER SCIENTIFIC RESEARCH USE ONLY (RUO). MUST NOT TO BE USED IN DIAGNOSTIC OR THERAPEUTIC APPLICATIONS.**



EB09942 (0.3µg/ml) staining of HepG2 cell lysate (A) and Negative control Caco-2 cell lysate (B) (35µg protein in RIPA buffer). Detected by chemiluminescence.



STJ72201 Immunofluorescence analysis of paraformaldehyde fixed HepG2 cells, permeabilized with 0.15% Triton. Primary incubation 1hr (10ug/ml) followed by Alexa Fluor 488 secondary antibody (2ug/ml), showing nuclear and mitochondria/cytoplasmic staining. The nuclear stain is DAPI (blue). Negative control: Unimmunized goat IgG (10ug/ml) followed by Alexa Fluor 488 secondary antibody (2ug/ml).