

## Anti-NALP2/PAN1 antibody (C-Term) (STJ72171)

### GENERAL INFORMATION

Product Type	Primary antibodies
Applications	Pep-ELISA/WB-Trf
Host / Source	Goat
Reactivity	Human

### PRODUCT PROPERTIES

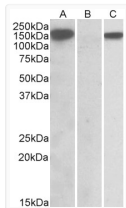
Clonality	Polyclonal
Concentration	0.5 mg/mL
Conjugation	Unconjugated
Purification	Purified from goat serum by ammonium sulphate precipitation followed by antigen affinity chromatography using the immunizing peptide.
Dilution Range	Peptide ELISA: antibody detection limit dilution 1:16000. WB: In transfected HEK293 transiently expressing full-length Human NLRP2 (myc and DYKDDDDK tagged) , a band of approx. 150kDa was observed. No bands were observed in mock-transfected HEK29
Formulation	0.5 mg/ml in Tris saline, 0.02% sodium azide, pH7.3 with 0.5% bovine serum albumin. NA
Isotype	IgG
Storage Instruction	Store at -20°C on receipt and minimise freeze-thaw cycles.

### TARGET INFORMATION

Gene ID	<a href="#">55655</a>
Gene Symbol	<a href="#">NLRP2</a>
UniProt ID	<a href="#">NALP2_HUMAN</a>
Immunogen Region	C-Term
Immunogen Sequence	KNPQLIIDTEKHHP

### ADDITIONAL INFORMATION

Note STRICTLY FOR FURTHER SCIENTIFIC RESEARCH USE ONLY (RUO). MUST NOT TO BE USED IN DIAGNOSTIC OR THERAPEUTIC APPLICATIONS.



HEK293 lysate (10ug protein in RIPA buffer) overexpressing Human NLRP2 with DYKDDDDK tag probed with STJ72171 (1ug/ml) in Lane A and probed with anti-DYKDDDDK Tag (1/5000) in lane C. Mock-transfected HEK293 probed with STJ72171 (1mg/ml) in Lane B. Primary incubations were for 1 hour. Detected by chemiluminescence.