

Anti-CRISP2 antibody (Internal) (STJ72153)

GENERAL INFORMATION

Product Type	Primary antibodies
Applications	Pep-ELISA/WB-Trf/IHC
Host / Source	Goat
Reactivity	Human/Pig/Dog

PRODUCT PROPERTIES

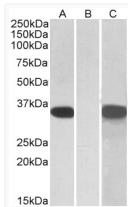
Clonality	Polyclonal
Concentration	0.5 mg/mL
Conjugation	Unconjugated
Purification	Purified from goat serum by ammonium sulphate precipitation followed by antigen affinity chromatography using the immunizing peptide.
Dilution Range	Peptide ELISA: antibody detection limit dilution 1:8000. WB: In transfected HEK293 transiently expressing Human CRISP2 (MYC and DYKDDDDK tagged) , a band of approx. 35kDa was observed. No bands were observed in mock-transfected HEK293 and the sam
Formulation	0.5 mg/ml in Tris saline, 0.02% sodium azide, pH7.3 with 0.5% bovine serum albumin. NA
Isotype	IgG
Storage Instruction	Store at -20°C on receipt and minimise freeze-thaw cycles.

TARGET INFORMATION

Gene ID	7180
Gene Symbol	CRISP2
UniProt ID	CRIS2_HUMAN
Immunogen Region	Internal
Immunogen Sequence	QHSDPEDRKTSTR
Specificity	Reported variants represent identical protein: NP_003287.1, NP_001135879.1, NP_001135889.1, NP_001135907.1, NP_001135880.1.

ADDITIONAL INFORMATION

Note STRICTLY FOR FURTHER SCIENTIFIC RESEARCH USE ONLY (RUO). MUST NOT TO BE USED IN DIAGNOSTIC OR THERAPEUTIC APPLICATIONS.



HEK293 lysate (10ug protein in RIPA buffer) overexpressing Human CRISP2 (RC205312) with C-terminal MYC tag probed with STJ72153 (1ug/ml) in Lane A and probed with anti-MYC Tag (1/1000) in lane C. Mock-transfected HEK293 probed with STJ72153 (1mg/ml) in Lane B. Detected by chemiluminescence.