

Anti-PON2 antibody (Internal) (STJ72145)

GENERAL INFORMATION

Product Type	Primary antibodies
Applications	Pep-ELISA/WB/IHC
Host / Source	Goat
Reactivity	Human/Rat/Pig/Dog

PRODUCT PROPERTIES

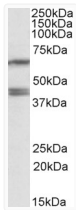
Clonality	Polyclonal
Concentration	0.5 mg/mL
Conjugation	Unconjugated
Purification	Purified from goat serum by ammonium sulphate precipitation followed by antigen affinity chromatography using the immunizing peptide.
Dilution Range	Peptide ELISA: antibody detection limit dilution 1:32000. WB: Approx 40kDa double band observed in lysates of HepG2 (calculated MW of 39.4kDa according to NP_000296.2 and of 38.0kDa according to NP_001018171.1). Recommended concentration: 0.2-0.6
Formulation	0.5 mg/ml in Tris saline, 0.02% sodium azide, pH7.3 with 0.5% bovine serum albumin. NA
Isotype	IgG
Storage Instruction	Store at -20°C on receipt and minimise freeze-thaw cycles.

TARGET INFORMATION

Gene ID	5445
Gene Symbol	PON2
UniProt ID	PON2_HUMAN
Immunogen Region	Internal
Immunogen Sequence	EKPRARELRIS
Specificity	This antibody is expected to recognize isoforms 1 and 2 (NP_000296.2; NP_001018171.1).

ADDITIONAL INFORMATION

Note STRICTLY FOR FURTHER SCIENTIFIC RESEARCH USE ONLY (RUO). MUST NOT TO BE USED IN DIAGNOSTIC OR THERAPEUTIC APPLICATIONS.



STJ72145 (0.2 µg/ml) staining of HepG2 lysate (35 µg protein in RIPA buffer). Detected by chemiluminescence.