

Anti-MICS1/GHITM antibody (Internal) (STJ72128)

GENERAL INFORMATION

Product Type	Primary antibodies
Applications	Pep-ELISA/WB
Host / Source	Goat
Reactivity	Human/Mouse/Rat/Dog/Cow/Pig

PRODUCT PROPERTIES

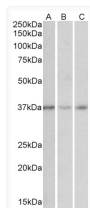
Clonality	Polyclonal
Concentration	0.5 mg/mL
Conjugation	Unconjugated
Purification	Purified from goat serum by ammonium sulphate precipitation followed by antigen affinity chromatography using the immunizing peptide.
Dilution Range	Peptide ELISA: antibody detection limit dilution 1:8000. WB: Approx 35kDa band observed in lysates of cell line HeLa and of Human Brain (Cerebellum) , Duodenum and Heart (calculated MW of 37.2kDa according to Human NP_055209.2). Recommended conce
Formulation	0.5 mg/ml in Tris saline, 0.02% sodium azide, pH7.3 with 0.5% bovine serum albumin. NA
Isotype	IgG
Storage Instruction	Store at -20°C on receipt and minimise freeze-thaw cycles.

TARGET INFORMATION

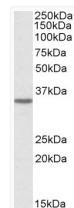
Gene ID	27069
Gene Symbol	GHITM
UniProt ID	GHITM_HUMAN
Immunogen Region	Internal
Immunogen Sequence	PSREYATKTRIGIR

ADDITIONAL INFORMATION

Note STRICTLY FOR FURTHER SCIENTIFIC RESEARCH USE ONLY (RUO). MUST NOT TO BE USED IN DIAGNOSTIC OR THERAPEUTIC APPLICATIONS.



STJ72128 (0.01 µg/ml) staining of Human Cerebellum (A) , Duodenum (B) and Heart (C) cell lysates (35 µg protein in RIPA buffer). Primary incubation was 1 hour. Detected by chemiluminescence.



STJ72128 (0.3 µg/ml) staining of HeLa cell lysate (35 µg protein in RIPA buffer). Primary incubation was 1 hour. Detected by chemiluminescence.