

Anti-IKZF4 antibody (Internal) (STJ72126)

GENERAL INFORMATION

Product Type	Primary antibodies
Applications	Pep-ELISA/WB/IF/FC
Host / Source	Goat
Reactivity	Human/Mouse/Dog/Cow

PRODUCT PROPERTIES

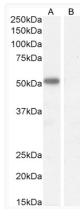
Clonality	Polyclonal
Concentration	0.5 mg/mL
Conjugation	Unconjugated
Purification	Purified from goat serum by ammonium sulphate precipitation followed by antigen affinity chromatography using the immunizing peptide.
Dilution Range	Peptide ELISA: antibody detection limit dilution 1:2000. WB: Approx 60kDa band observed in nuclear lysates of cell line Jurkat, approx. 60+70kDa in nuclear lysates of cell line K562, and approx. 55kDa in Mouse Heart lysates (calculated MW of 64.
Formulation	0.5 mg/ml in Tris saline, 0.02% sodium azide, pH7.3 with 0.5% bovine serum albumin. NA
Isotype	IgG
Storage Instruction	Store at -20°C on receipt and minimise freeze-thaw cycles.

TARGET INFORMATION

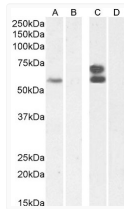
Gene ID	64375
Gene Symbol	IKZF4
UniProt ID	IKZF4_HUMAN
Immunogen Region	Internal
Immunogen Sequence	RPTFIDRLANSLTKR
Specificity	This antibody is expected to recognise reported isoforms NP_071910.3; NP_001338019.1; NP_001338020.1; NP_001338021.1

ADDITIONAL INFORMATION

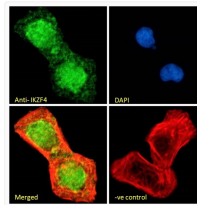
Note STRICTLY FOR FURTHER SCIENTIFIC RESEARCH USE ONLY (RUO). MUST NOT TO BE USED IN DIAGNOSTIC OR THERAPEUTIC APPLICATIONS.



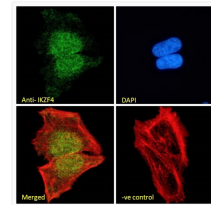
STJ72126 (1ug/ml) staining of Mouse Heart lysate (35µg protein in RIPA buffer). Detected by chemiluminescence.



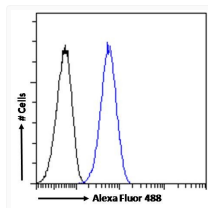
STJ72126 (2µg/ml) staining of Jurkat nuclear lysate (A) + Peptide (B) , and (0.1ug/ml) staining of K562 nuclear lysate (C) + Peptide (D) , (35µg protein in RIPA buffer). Detected by chemiluminescence.



STJ72126 Immunofluorescence analysis of paraformaldehyde fixed U2OS cells, permeabilized with 0.15% Triton. Primary incubation 1hr (10ug/ml) followed by Alexa Fluor 488 secondary antibody (2ug/ml) , showing nuclear staining. Actin filaments were stained with phalloidin (red) and the nuclear stain is DAPI (blue). Negative control: Unimmunized goat IgG (10ug/ml) followed by Alexa Fluor 488 secondary antibody (2ug/ml).



STJ72126 Immunofluorescence analysis of paraformaldehyde fixed HeLa cells, permeabilized with 0.15% Triton. Primary incubation 1hr (10ug/ml) followed by Alexa Fluor 488 secondary antibody (2ug/ml) , showing nuclear staining. Actin filaments were stained with phalloidin (red) and the nuclear stain is DAPI (blue). Negative control: Unimmunized goat IgG (10ug/ml) followed by Alexa Fluor 488 secondary antibody (2ug/ml).



STJ72126 Flow cytometric analysis of paraformaldehyde fixed HeLa cells (blue line) , permeabilized with 0.5% Triton. Primary incubation 1hr (10ug/ml) followed by Alexa Fluor 488 secondary antibody (1ug/ml). IgG control: Unimmunized goat IgG (black line) followed by Alexa Fluor 488 secondary antibody.