

Anti-TGFBI antibody (Internal) (STJ72119)

GENERAL INFORMATION

Product Type	Primary antibodies
Applications	Pep-ELISA/WB/IHC/IF
Host / Source	Goat
Reactivity	Human/Mouse/Rat/Dog

PRODUCT PROPERTIES

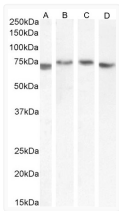
Clonality	Polyclonal
Concentration	0.5 mg/mL
Conjugation	Unconjugated
Purification	Purified from goat serum by ammonium sulphate precipitation followed by antigen affinity chromatography using the immunizing peptide.
Dilution Range	Peptide ELISA: antibody detection limit dilution 1:32000. WB: Approx 70kDa band observed in Human and Rat Kidney lysates, and approx 75kDa in Human Prostate and Human Colorectal cancer lysates (calculated MW of 74.7kDa according to Human NP_00034)
Formulation	0.5 mg/ml in Tris saline, 0.02% sodium azide, pH7.3 with 0.5% bovine serum albumin. NA
Isotype	IgG
Storage Instruction	Store at -20°C on receipt and minimise freeze-thaw cycles.

TARGET INFORMATION

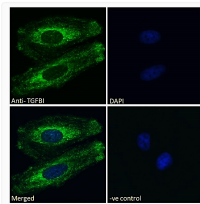
Gene ID	7045
Gene Symbol	TGFB1
UniProt ID	BGH3_HUMAN
Immunogen Region	Internal
Immunogen Sequence	QLYDTRTEKLRPE

ADDITIONAL INFORMATION

Note **STRICTLY FOR FURTHER SCIENTIFIC RESEARCH USE ONLY (RUO). MUST NOT TO BE USED IN DIAGNOSTIC OR THERAPEUTIC APPLICATIONS.**



STJ72119 (0.3µg/ml) staining of Human Kidney (A), Colorectal cancer (B), (0.1µg/ml) Human Prostate (C) and Rat Kidney (D) lysate (35µg protein in RIPA buffer). Detected by chemiluminescence.



STJ72119 Immunofluorescence analysis of paraformaldehyde fixed HeLa cells, permeabilized with 0.15% Triton. Primary incubation 1hr (10µg/ml) followed by Alexa Fluor 488 secondary antibody (2µg/ml), showing golgi and membrane staining. The nuclear stain is DAPI (blue). Negative control: Unimmunized goat IgG (10µg/ml) followed by Alexa Fluor 488 secondary antibody (2µg/ml).