

Anti-PRDM1/MEL1 antibody (Internal) (STJ72074)

GENERAL INFORMATION

Product Type	Primary antibodies
Applications	Pep-ELISA/WB/IHC/IF/FC
Host / Source	Goat
Reactivity	Human/Mouse/Rat/Dog/Cow/Pig

PRODUCT PROPERTIES

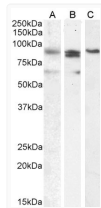
Clonality	Polyclonal
Concentration	0.5 mg/mL
Conjugation	Unconjugated
Purification	Purified from goat serum by ammonium sulphate precipitation followed by antigen affinity chromatography using the immunizing peptide.
Dilution Range	Peptide ELISA: antibody detection limit dilution 1:1000. WB: Approx 90kDa band observed in lysates of cell lines A431 and Nuclear K562, and approx. 100kDa in lysates of cell line K562. An additional faint band of approx 70kDa was also seen in som
Formulation	0.5 mg/ml in Tris saline, 0.02% sodium azide, pH7.3 with 0.5% bovine serum albumin. NA
Isotype	IgG
Storage Instruction	Store at -20°C on receipt and minimise freeze-thaw cycles.

TARGET INFORMATION

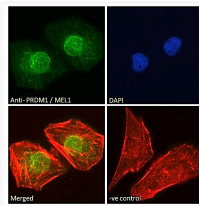
Gene ID	639
Gene Symbol	PRDM1
UniProt ID	PRDM1_HUMAN
Immunogen Region	Internal
Immunogen Sequence	DISDNADRLEDVED
Specificity	This antibody is expected to recognize both reported isoforms (NP_001189.2; NP_878911.1).

ADDITIONAL INFORMATION

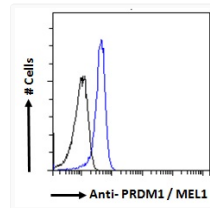
Note **STRICTLY FOR FURTHER SCIENTIFIC RESEARCH USE ONLY (RUO). MUST NOT TO BE USED IN DIAGNOSTIC OR THERAPEUTIC APPLICATIONS.**



STJ72074 (0.1 µg/ml) staining of A431 (A), (2 µg/ml) K562 (B) and (1 µg/ml) Nuclear K562 (C) cell lysate (35 µg protein in RIPA buffer). Detected by chemiluminescence.



STJ72074 Immunofluorescence analysis of paraformaldehyde fixed HeLa cells, permeabilized with 0.15% Triton. Primary incubation 1 hr (10 µg/ml) followed by Alexa Fluor 488 secondary antibody (2 µg/ml), showing nuclear staining. Actin filaments were stained with phalloidin (red) and the nuclear stain is DAPI (blue). Negative control: Unimmunized goat IgG (10 µg/ml) followed by Alexa Fluor 488 secondary antibody (2 µg/ml).



STJ72074 Flow cytometric analysis of paraformaldehyde fixed A431 cells (blue line), permeabilized with 0.5% Triton. Primary incubation 1 hr (10 µg/ml) followed by Alexa Fluor 488 secondary antibody (1 µg/ml). IgG control: Unimmunized goat IgG (10 µg/ml) followed by Alexa Fluor 488 secondary antibody.