

## Anti-TET2 antibody (Internal) (STJ72029)

### GENERAL INFORMATION

Product Type	Primary antibodies
Applications	Pep-ELISA/IHC/FC
Host / Source	Goat
Reactivity	Human/Mouse/Dog

### PRODUCT PROPERTIES

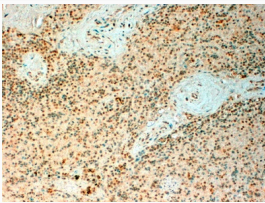
Clonality	Polyclonal
Concentration	0.5 mg/mL
Conjugation	Unconjugated
Purification	Purified from goat serum by ammonium sulphate precipitation followed by antigen affinity chromatography using the immunizing peptide.
Dilution Range	Peptide ELISA: antibody detection limit dilution 1:16000. IHC: In paraffin embedded Human Spleen shows nuclear staining in select splenocytes. Recommended concentration: 2-6µg/ml. FC: Flow cytometric analysis of A431 cells. Recommended concent
Formulation	0.5 mg/ml in Tris saline, 0.02% sodium azide, pH7.3 with 0.5% bovine serum albumin. NA
Isotype	IgG
Storage Instruction	Store at -20°C on receipt and minimise freeze-thaw cycles.

### TARGET INFORMATION

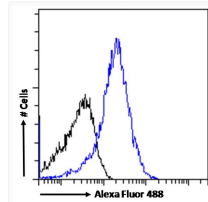
Gene ID	<a href="#">54790</a>
Gene Symbol	<a href="#">TET2</a>
UniProt ID	<a href="#">TET2_HUMAN</a>
Immunogen Region	Internal
Immunogen Sequence	PHPQSNNDQREGSF
Specificity	This antibody is expected to recognize both reported isoforms (NP_001120680.1; NP_060098.3).

### ADDITIONAL INFORMATION

Note STRICTLY FOR FURTHER SCIENTIFIC RESEARCH USE ONLY (RUO). MUST NOT TO BE USED IN DIAGNOSTIC OR THERAPEUTIC APPLICATIONS.



STJ72029 (4µg/ml) staining of paraffin embedded Human Spleen. Steamed antigen retrieval with citrate buffer pH 6, HRP-staining.



STJ72029 Flow cytometric analysis of paraformaldehyde fixed A431 cells (blue line), permeabilized with 0.5% Triton. Primary incubation 1hr (10ug/ml) followed by Alexa Fluor 488 secondary antibody (1ug/ml). IgG control: Unimmunized goat IgG (black line) followed by Alexa Fluor 488 secondary antibody.