

## Anti-NEFM/NF-M antibody (Internal) (STJ72028)

### GENERAL INFORMATION

Product Type	Primary antibodies
Applications	Pep-ELISA/WB/IHC
Host / Source	Goat
Reactivity	Human/Mouse/Rat/Dog/Pig/Cow

### PRODUCT PROPERTIES

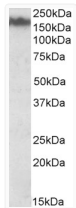
Clonality	Polyclonal
Concentration	0.5 mg/mL
Conjugation	Unconjugated
Purification	Purified from goat serum by ammonium sulphate precipitation followed by antigen affinity chromatography using the immunizing peptide.
Dilution Range	Peptide ELISA: antibody detection limit dilution 1:128000. WB: Approx 170-200kDa band observed in Mouse Brain lysates (calculated MW of 102kDa according to NP_005373.2). This molecular weight is routinely observed by other sources. Recommended co
Formulation	0.5 mg/ml in Tris saline, 0.02% sodium azide, pH7.3 with 0.5% bovine serum albumin. NA
Isotype	IgG
Storage Instruction	Store at -20°C on receipt and minimise freeze-thaw cycles.

### TARGET INFORMATION

Gene ID	<a href="#">4741</a>
Gene Symbol	<a href="#">NEFM</a>
UniProt ID	<a href="#">NFM_HUMAN</a>
Immunogen Region	Internal
Immunogen Sequence	QASHITVERKDYLK
Specificity	This antibody is expected to recognize reported isoform 1 (NP_005373.2) only.

### ADDITIONAL INFORMATION

Note STRICTLY FOR FURTHER SCIENTIFIC RESEARCH USE ONLY (RUO). MUST NOT TO BE USED IN DIAGNOSTIC OR THERAPEUTIC APPLICATIONS.



STJ72028 (0.03 µg/ml) staining of Mouse Brain lysate (35 µg protein in RIPA buffer). Detected by chemiluminescence.