

## Anti-CYB5R3/Dia 1-Mouse antibody (C-Term) (STJ72019)

### GENERAL INFORMATION

Product Type	Primary antibodies
Applications	Pep-ELISA/WB
Host / Source	Goat
Reactivity	Mouse/Rat/Dog/Cow

### PRODUCT PROPERTIES

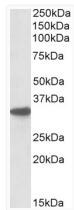
Clonality	Polyclonal
Concentration	0.5 mg/mL
Conjugation	Unconjugated
Purification	Purified from goat serum by ammonium sulphate precipitation followed by antigen affinity chromatography using the immunizing peptide.
Dilution Range	Peptide ELISA: antibody detection limit dilution 1:32000. WB: Approx 35kDa band observed in Mouse Liver lysates as well as in mouse and rat brain lysates (calculated MW of 34.1kDa according to mouse NP_084063.1). Recommended concentration: 0.1-1 $\mu$
Formulation	0.5 mg/ml in Tris saline, 0.02% sodium azide, pH7.3 with 0.5% bovine serum albumin. NA
Isotype	IgG
Storage Instruction	Store at -20°C on receipt and minimise freeze-thaw cycles.

### TARGET INFORMATION

Immunogen Region	C-Term
Immunogen Sequence	PNLERVGHPKERC

### ADDITIONAL INFORMATION

Note STRICTLY FOR FURTHER SCIENTIFIC RESEARCH USE ONLY (RUO). MUST NOT TO BE USED IN DIAGNOSTIC OR THERAPEUTIC APPLICATIONS.



STJ72019 (0.1  $\mu$ g/ml) staining of Mouse Liver lysate (RIPA buffer, 35  $\mu$ g total protein per lane). Primary incubated for 1 hour. Detected by western blot using chemiluminescence.