

Anti-eIF5A antibody (Internal) (STJ72008)

GENERAL INFORMATION

Product Type	Primary antibodies
Applications	Pep-ELISA/WB/IHC
Host / Source	Goat
Reactivity	Human

PRODUCT PROPERTIES

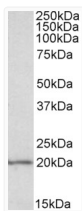
Clonality	Polyclonal
Concentration	0.5 mg/mL
Conjugation	Unconjugated
Purification	Purified from goat serum by ammonium sulphate precipitation followed by antigen affinity chromatography using the immunizing peptide.
Dilution Range	Peptide ELISA: antibody detection limit dilution 1:128000. WB: Approx 20kDa band observed in MOLT4 lysates (calculated MW of 20.2kDa according to NP_001137232.1). Recommended concentration: 1-3µg/ml. Primary incubation was 1 hour. This antibody h
Formulation	0.5 mg/ml in Tris saline, 0.02% sodium azide, pH7.3 with 0.5% bovine serum albumin. NA
Isotype	IgG
Storage Instruction	Store at -20°C on receipt and minimise freeze-thaw cycles.

TARGET INFORMATION

Gene ID	1984
Gene Symbol	EIF5A
UniProt ID	IF5A1_HUMAN
Immunogen Region	Internal
Immunogen Sequence	RPPHRASFLKRLESK
Specificity	Reported variants NP_001137233.1, NP_001961.1 and NP_001137234.1 represent identical protein:

ADDITIONAL INFORMATION

Note STRICTLY FOR FURTHER SCIENTIFIC RESEARCH USE ONLY (RUO). MUST NOT TO BE USED IN DIAGNOSTIC OR THERAPEUTIC APPLICATIONS.



STJ72008 (0.1 µg/ml) staining of MOLT4 lysate (35 µg protein in RIPA buffer). Detected by chemiluminescence.