

## Anti-NUDC antibody (Internal) (STJ71978)

### GENERAL INFORMATION

Product Type	Primary antibodies
Applications	Pep-ELISA/WB/IF
Host / Source	Goat
Reactivity	Human/Mouse/Rat/Dog/Cow

### PRODUCT PROPERTIES

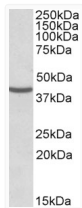
Clonality	Polyclonal
Concentration	0.5 mg/mL
Conjugation	Unconjugated
Purification	Purified from goat serum by ammonium sulphate precipitation followed by antigen affinity chromatography using the immunizing peptide.
Dilution Range	Peptide ELISA: antibody detection limit dilution 1:32000. WB: Approx 40kDa band observed in lysates of cell lines HeLa, HepG2 and K562, and approx. 38kDa in lysates of cell line KNRK (calculated MW of 38.2kDa according to Human NP_006591.1) and 3
Formulation	0.5 mg/ml in Tris saline, 0.02% sodium azide, pH7.3 with 0.5% bovine serum albumin. NA
Isotype	IgG
Storage Instruction	Store at -20°C on receipt and minimise freeze-thaw cycles.

### TARGET INFORMATION

Gene ID	<a href="#">10726</a>
Gene Symbol	<a href="#">NUDC</a>
UniProt ID	<a href="#">NUDC_HUMAN</a>
Immunogen Region	Internal
Immunogen Sequence	PNLGNGADLPNYR

### ADDITIONAL INFORMATION

Note STRICTLY FOR FURTHER SCIENTIFIC RESEARCH USE ONLY (RUO). MUST NOT TO BE USED IN DIAGNOSTIC OR THERAPEUTIC APPLICATIONS.



STJ71978 (0.3 µg/ml) staining of HeLa lysate (35 µg protein in RIPA buffer). Primary incubation was 1 hour. Detected by chemiluminescence.