

Anti-PDPN antibody (Internal) (STJ71950)

GENERAL INFORMATION

Product Type	Primary antibodies
Applications	Pep-ELISA/WB
Host / Source	Goat
Reactivity	Human/Dog

PRODUCT PROPERTIES

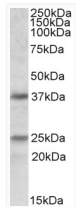
Clonality	Polyclonal
Concentration	0.5 mg/mL
Conjugation	Unconjugated
Purification	Purified from goat serum by ammonium sulphate precipitation followed by antigen affinity chromatography using the immunizing peptide.
Dilution Range	Peptide ELISA: antibody detection limit dilution 1:1000. WB: Experiments gave bands at approx 25kDa and 37kDa in Human Brain (Cerebellum) lysates after 1µg/ml antibody staining. The 37kDa band corresponds to earlier findings in literature with di
Formulation	0.5 mg/ml in Tris saline, 0.02% sodium azide, pH7.3 with 0.5% bovine serum albumin. NA
Isotype	IgG
Storage Instruction	Store at -20°C on receipt and minimise freeze-thaw cycles.

TARGET INFORMATION

Gene ID	10630
Gene Symbol	PDPN
UniProt ID	PDPN_HUMAN
Immunogen Region	Internal
Immunogen Sequence	EKVDGDTQTTVEKD
Specificity	This antibody is expected to recognize all isoforms (NP_006465.3; NP_938203.2; NP_001006625.1; NP_001006626.1).

ADDITIONAL INFORMATION

Note STRICTLY FOR FURTHER SCIENTIFIC RESEARCH USE ONLY (RUO). MUST NOT TO BE USED IN DIAGNOSTIC OR THERAPEUTIC APPLICATIONS.



STJ71950 (1µg/ml) staining of Human Cerebellum lysate (35µg protein in RIPA buffer). Primary incubation was 1 hour. Detected by chemiluminescence.