

## Anti-WNT15/WNT9B antibody (Internal) (STJ71949)

### GENERAL INFORMATION

Product Type	Primary antibodies
Applications	Pep-ELISA/WB
Host / Source	Goat
Reactivity	Human/Mouse/Rat

### PRODUCT PROPERTIES

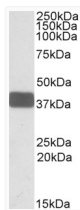
Clonality	Polyclonal
Concentration	0.5 mg/mL
Conjugation	Unconjugated
Purification	Purified from goat serum by ammonium sulphate precipitation followed by antigen affinity chromatography using the immunizing peptide.
Dilution Range	Peptide ELISA: antibody detection limit dilution 1:8000. WB: Approx 38kDa band observed in Human Brain Cerebellum lysates and in Mouse Kidney and Brain lysates (calculated MW of 39kDa according to NP_003387.1). Recommended concentration: 0.3-1µg/
Formulation	0.5 mg/ml in Tris saline, 0.02% sodium azide, pH7.3 with 0.5% bovine serum albumin. NA
Isotype	IgG
Storage Instruction	Store at -20°C on receipt and minimise freeze-thaw cycles.

### TARGET INFORMATION

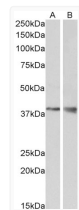
Gene ID	<a href="#">7484</a>
Gene Symbol	<a href="#">WNT9B</a>
UniProt ID	<a href="#">WNT9B_HUMAN</a>
Immunogen Region	Internal
Immunogen Sequence	KRGNKDLRARADA

### ADDITIONAL INFORMATION

Note STRICTLY FOR FURTHER SCIENTIFIC RESEARCH USE ONLY (RUO). MUST NOT TO BE USED IN DIAGNOSTIC OR THERAPEUTIC APPLICATIONS.



STJ71949 (0.3µg/ml) staining of Human Brain Cerebellum lysate (35µg protein in RIPA buffer). Primary incubation was 1 hour. Detected by chemiluminescence.



STJ71949 (1µg/ml) staining of Mouse Kidney (A) and Brain (B) lysate (35µg protein in RIPA buffer). Primary incubation was 1 hour. Detected by chemiluminescence.