

Anti-E2F6 antibody (C-Term) (STJ71943)

GENERAL INFORMATION

| | |
|---------------|--------------------|
| Product Type | Primary antibodies |
| Applications | Pep-ELISA/WB |
| Host / Source | Goat |
| Reactivity | Human/Dog/Cow |

PRODUCT PROPERTIES

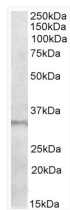
| | |
|---------------------|---|
| Clonality | Polyclonal |
| Concentration | 0.5 mg/mL |
| Conjugation | Unconjugated |
| Purification | Purified from goat serum by ammonium sulphate precipitation followed by antigen affinity chromatography using the immunizing peptide. |
| Dilution Range | Peptide ELISA: antibody detection limit dilution 1:4000. WB: Approx 33kDa band observed in Human Skeletal Muscle lysates (calculated MW of 31.8kDa according to NP_937987.2). Recommended concentration: 1-3µg/ml. |
| Formulation | 0.5 mg/ml in Tris saline, 0.02% sodium azide, pH7.3 with 0.5% bovine serum albumin. NA |
| Isotype | IgG |
| Storage Instruction | Store at -20°C on receipt and minimise freeze-thaw cycles. |

TARGET INFORMATION

| | |
|--------------------|----------------------------|
| Gene ID | 1876 |
| Gene Symbol | E2F6 |
| UniProt ID | E2F6_HUMAN |
| Immunogen Region | C-Term |
| Immunogen Sequence | NPQQSEELLEVS |

ADDITIONAL INFORMATION

Note STRICTLY FOR FURTHER SCIENTIFIC RESEARCH USE ONLY (RUO). MUST NOT TO BE USED IN DIAGNOSTIC OR THERAPEUTIC APPLICATIONS.



STJ71943 (1µg/ml) staining of Human Skeletal Muscle lysate (35µg protein in RIPA buffer). Primary incubation was 1 hour. Detected by chemiluminescence.