

Anti-CCT3/TCP1 antibody (C-Term) (STJ71930)

GENERAL INFORMATION

Product Type	Primary antibodies
Applications	Pep-ELISA/WB/IHC
Host / Source	Goat
Reactivity	Human/Mouse/Rat/Pig/Cow/Dog

PRODUCT PROPERTIES

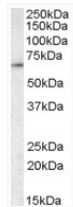
Clonality	Polyclonal
Concentration	0.5 mg/mL
Conjugation	Unconjugated
Purification	Purified from goat serum by ammonium sulphate precipitation followed by antigen affinity chromatography using the immunizing peptide.
Dilution Range	Peptide ELISA: antibody detection limit dilution 1:32000. WB: Approx 65kDa band observed in Mouse Testis lysates (calculated MW of 60.5kDa according to Human NP_005989.3 and 60.6kDa according to Mouse NP_033966.1 and Rat NP_954522.1). Recommended
Formulation	0.5 mg/ml in Tris saline, 0.02% sodium azide, pH7.3 with 0.5% bovine serum albumin. NA
Isotype	IgG
Storage Instruction	Store at -20°C on receipt and minimise freeze-thaw cycles.

TARGET INFORMATION

Gene ID	7203
Gene Symbol	CCT3
UniProt ID	TCPG_HUMAN
Immunogen Region	C-Term
Immunogen Sequence	GHKKKGDDQSRQGG
Specificity	This antibody is expected to recognize all reported isoforms (NP_005989.3; NP_001008883.1; NP_001008800.1).

ADDITIONAL INFORMATION

Note STRICTLY FOR FURTHER SCIENTIFIC RESEARCH USE ONLY (RUO). MUST NOT TO BE USED IN DIAGNOSTIC OR THERAPEUTIC APPLICATIONS.



STJ71930 (0.01 µg/ml) staining of Mouse Testis lysate (35 µg protein in RIPA buffer). Primary incubation was 1 hour. Detected by chemiluminescence.