

Anti-FMR1 antibody (116-130) (STJ71919)

GENERAL INFORMATION

Product Type	Primary antibodies
Applications	Pep-ELISA/WB/IHC
Host / Source	Goat
Reactivity	Human/Rat

PRODUCT PROPERTIES

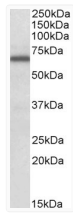
Clonality	Polyclonal
Concentration	0.5 mg/mL
Conjugation	Unconjugated
Purification	Purified from goat serum by ammonium sulphate precipitation followed by antigen affinity chromatography using the immunizing peptide.
Dilution Range	Peptide ELISA: antibody detection limit dilution 1:32000. WB: Approx 70kDa band observed in lysates of cell lines HeLa, Jurkat and Kelly (calculated MW of 71.2kDa according to NP_002015.1). Recommended concentration: 0.3-1µg/ml. IHC: Paraffin
Formulation	0.5 mg/ml in Tris saline, 0.02% sodium azide, pH7.3 with 0.5% bovine serum albumin. NA
Isotype	IgG
Storage Instruction	Store at -20°C on receipt and minimise freeze-thaw cycles.

TARGET INFORMATION

Gene ID	2332
Gene Symbol	FMR1
UniProt ID	FMR1_HUMAN
Immunogen Region	116-130
Immunogen Sequence	NPNKPATKDTFHKIK

ADDITIONAL INFORMATION

Note STRICTLY FOR FURTHER SCIENTIFIC RESEARCH USE ONLY (RUO). MUST NOT TO BE USED IN DIAGNOSTIC OR THERAPEUTIC APPLICATIONS.



STJ71919 (0.3µg/ml) staining of Kelly lysate (35µg protein in RIPA buffer). Primary incubation was 1 hour. Detected by chemiluminescence.